

# Underage Alcohol Enforcement in the US

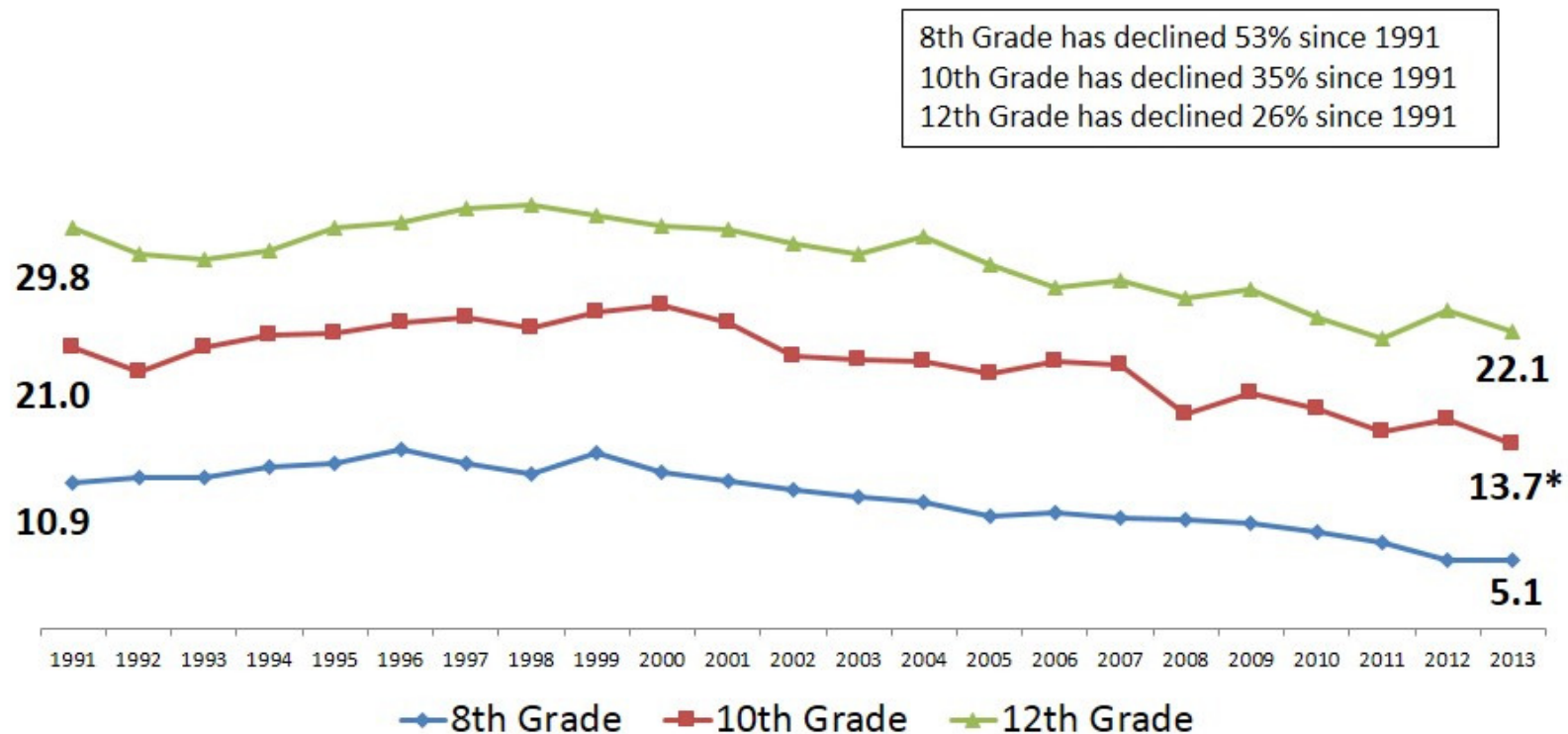
Darin J. Erickson, PhD

Assistant Professor

Division of Epidemiology and Community Health

University of Minnesota

## Percent of 8th, 10th & 12th Graders Who Report Binge Drinking: 1991-2013

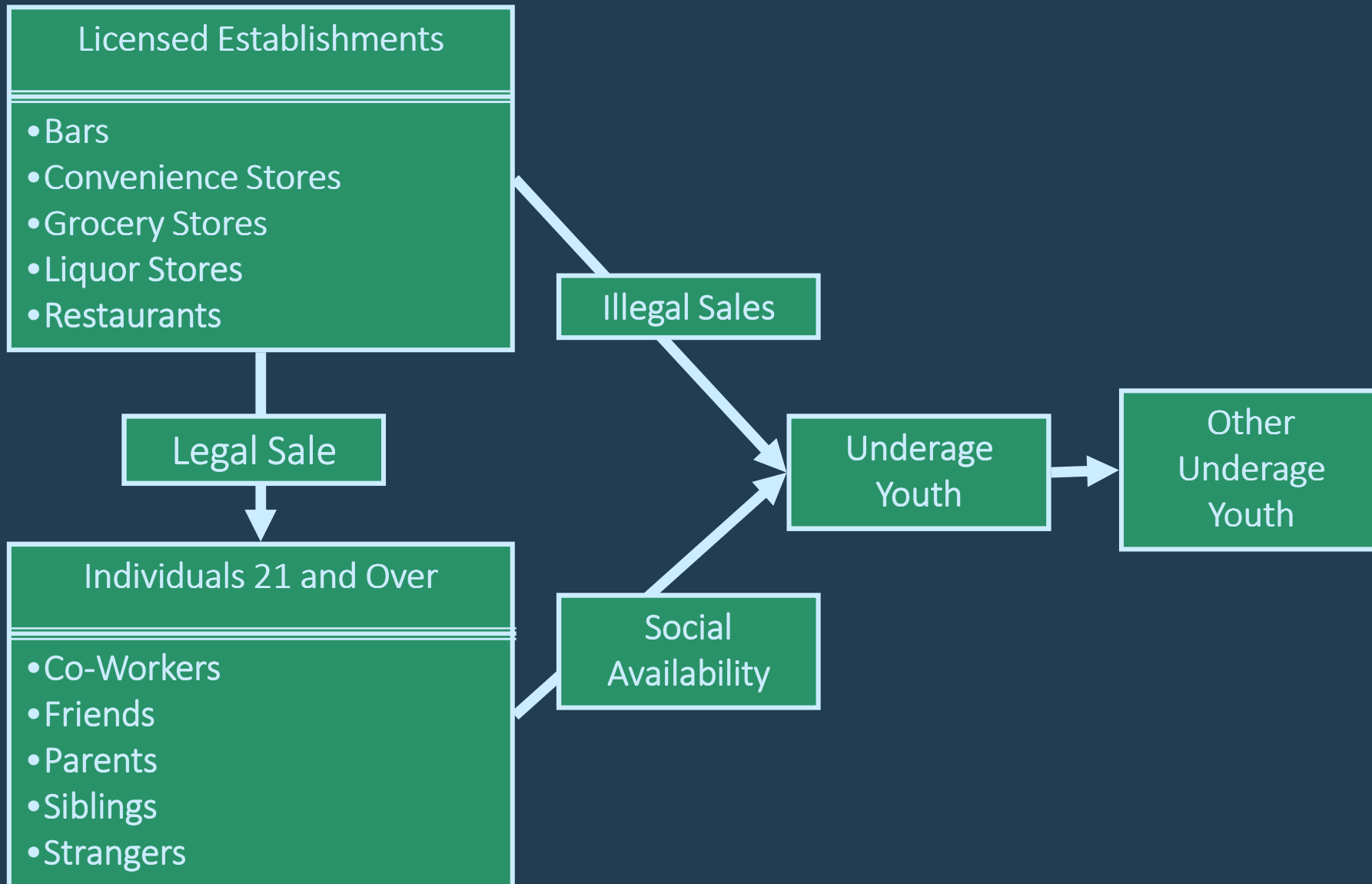


Source: NIDA, *National Survey Results on Drug Use from the Monitoring The Future Study*, Vol. II Johnston L., et al, U. of Michigan, 12/13

Note: Author state language on the 93/94 survey changed slightly.

\* Indicates a statistically significant decrease

# Potential Sources of Youth Access to Alcohol



# Minimum Drinking Age Effects

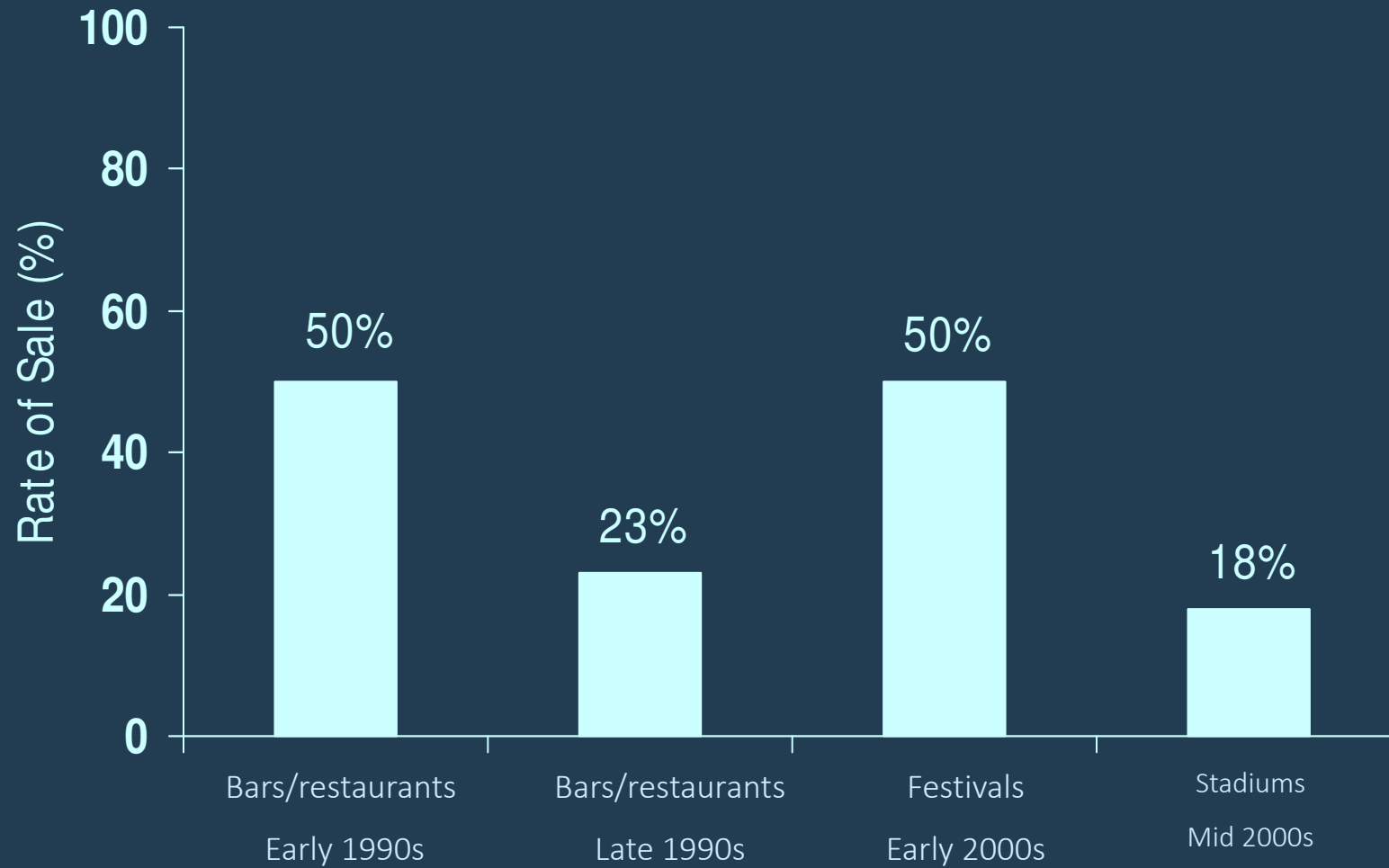
- Alcohol consumption
- Traffic crashes
- Suicides
- Hospital admissions
- Pedestrian accidents
- Vandalism

# Commercial Availability

# Commercial Sources

- Underage individual purchases alcohol directly from licensed retailer
- More common source among older underage youth (e.g., 19-20 years of age) than younger
- Underage individuals who purchase large quantities of alcohol may provide to other underage youth

# Propensity of Sales to Underage



# Strategies to Reduce Commercial Access for Youth



- Compliance checks
- Administrative penalties
- Server training
- Manager training
- Minimum age of seller
- Ban home delivery
- Enhancement of drivers license



# Strategies to Reduce Commercial Access for Youth



- Compliance checks
- Administrative penalties
- Server training
- Manager training
- Minimum age of seller
- Ban home delivery
- Enhancement of drivers license

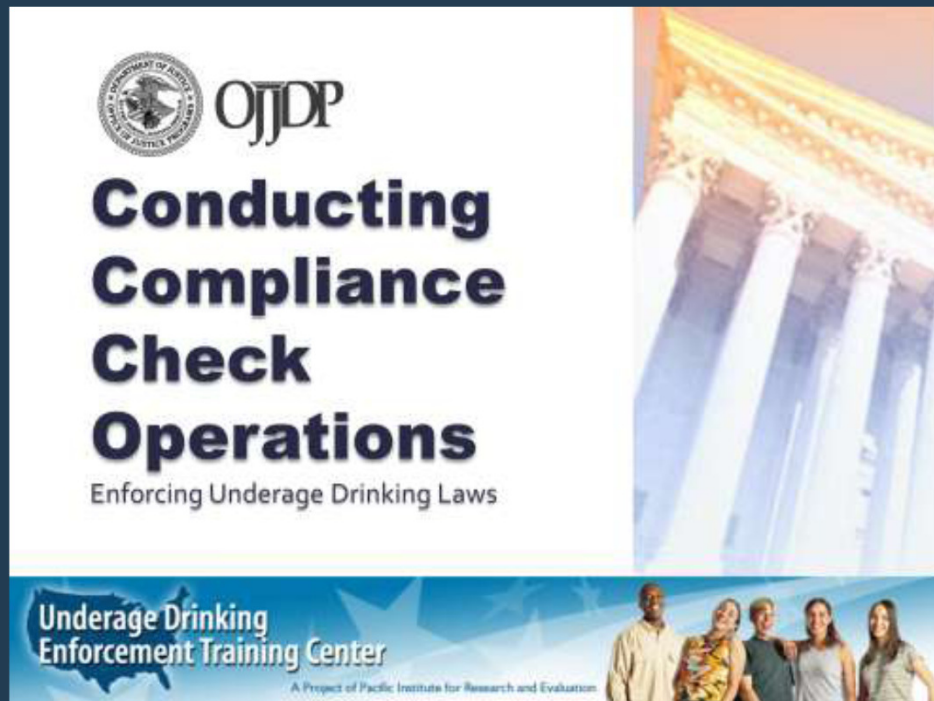
# Compliance Checks

- Conducted by:
  - Local law enforcement
  - State ABC
- Underage person attempts to purchase alcohol
- If there is an alcohol sale, potential consequences for:
  - License holder
  - Server/clerk

# Penalties

- Administrative penalties for license holders
  - Graduated
  - Fines, license suspension, license revocation
- Criminal penalties for server
  - Gross misdemeanor
  - Often pled down to misdemeanor

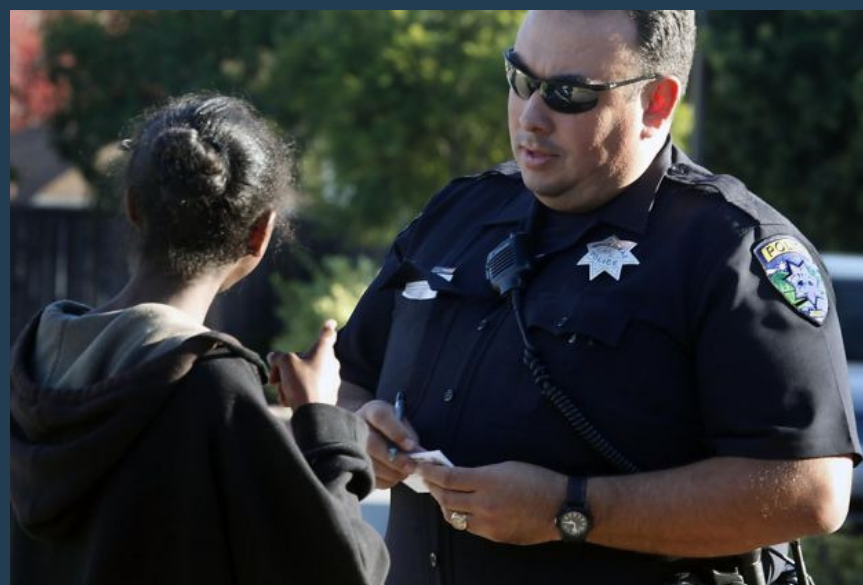
# Compliance Checks



- Early history: 1990s
- Built on tobacco control
- Compliance check resources developed and disseminated

# Compliance Checks Work

- Reduce likelihood of alcohol sales to underage
- Effective for on-and off-premise establishments
- Spill over to neighboring establishments
- But have short-term effects!



# Characteristics of Strong Compliance Check Campaigns

- Check all establishments
- Conduct more than one or two checks per year
- Conduct follow-up checks within 3 months
- Consequences for license holder (vs. only server/clerk)

# Results: National Survey

## Local Agencies

Conduct Checks: 37%

All establishments: 55%

3-4 times a year: 21%

## ABC Agencies

Conduct Checks: 76%

All establishments: 59%

3-4 times a year: 21%

# Results: National Survey

## Local Agencies

Rechecks within 3 months: 35%

Licensees penalized: 56%

Model Checks: 4%

## ABC Agencies

Rechecks within 3 months: 34%

Licensees penalized: 86%

Model Checks: 6%

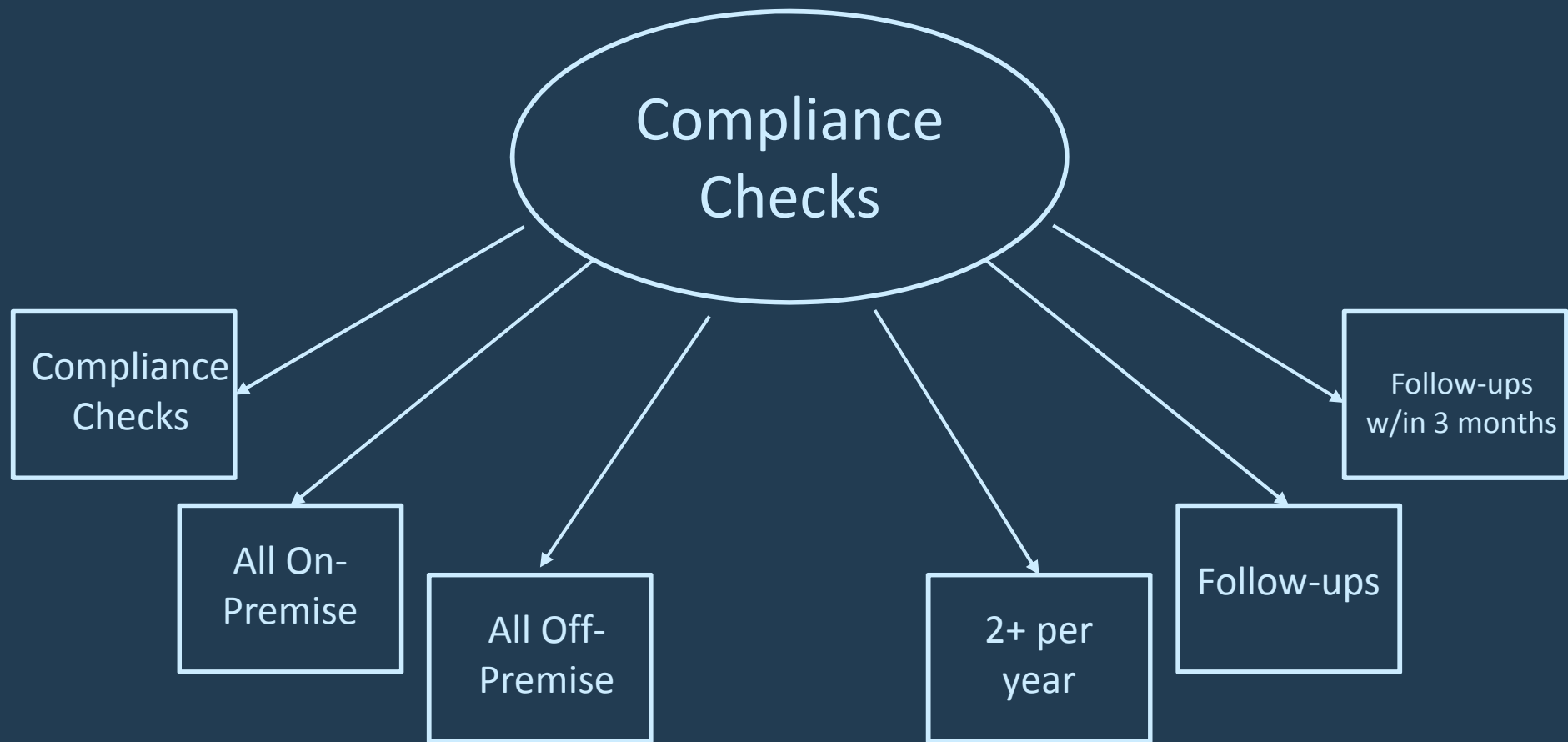


# Predictors of Compliance Check Enforcement

Law enforcement agencies were significantly more likely to conduct compliance checks if:

- was from a large city (vs small town)
- there was a full time officer assigned to alcohol enforcement
- the agency has an alcohol-related division

# How do compliance check enforcement activities cluster?



# Four Clusters

Percentage of Agencies	What do they do?
61%	Not much of any compliance checks
8%	Do compliance checks, but not all and little follow-up
6%	Do compliance checks, but not all, good follow-up
26%	Fairly good comprehensive compliance checks

# Community Prevention Guide

Dram Shop Liability	Recommended
Increasing Alcohol Taxes	Recommended
Maintaining Limits on Days of Sale	Recommended
Maintaining Limits on Hours of Sale	Recommended
Regulation Outlet Density	Recommended
RBS Training	Insufficient Evidence
Enforcement of Underage Laws	Recommended

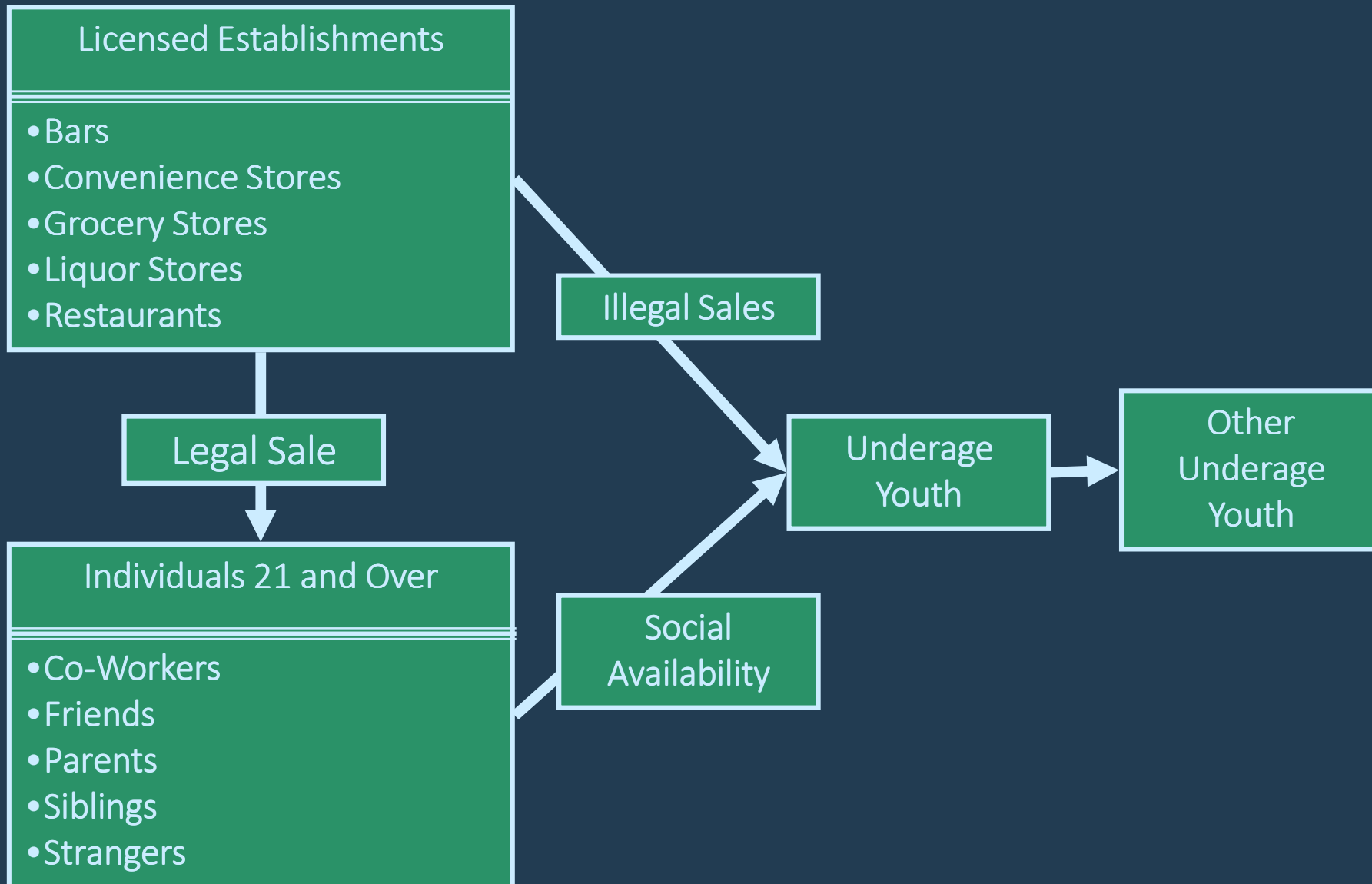
<http://www.thecommunityguide.org/index.html>

# Summary

- Reducing commercial availability is effective in reducing use and problems
- Important to understand what is contributing most to use and problems you are targeting
- Use most effective strategies
- Use multiple strategies

# Social Availability

# Potential Sources of Youth Access to Alcohol

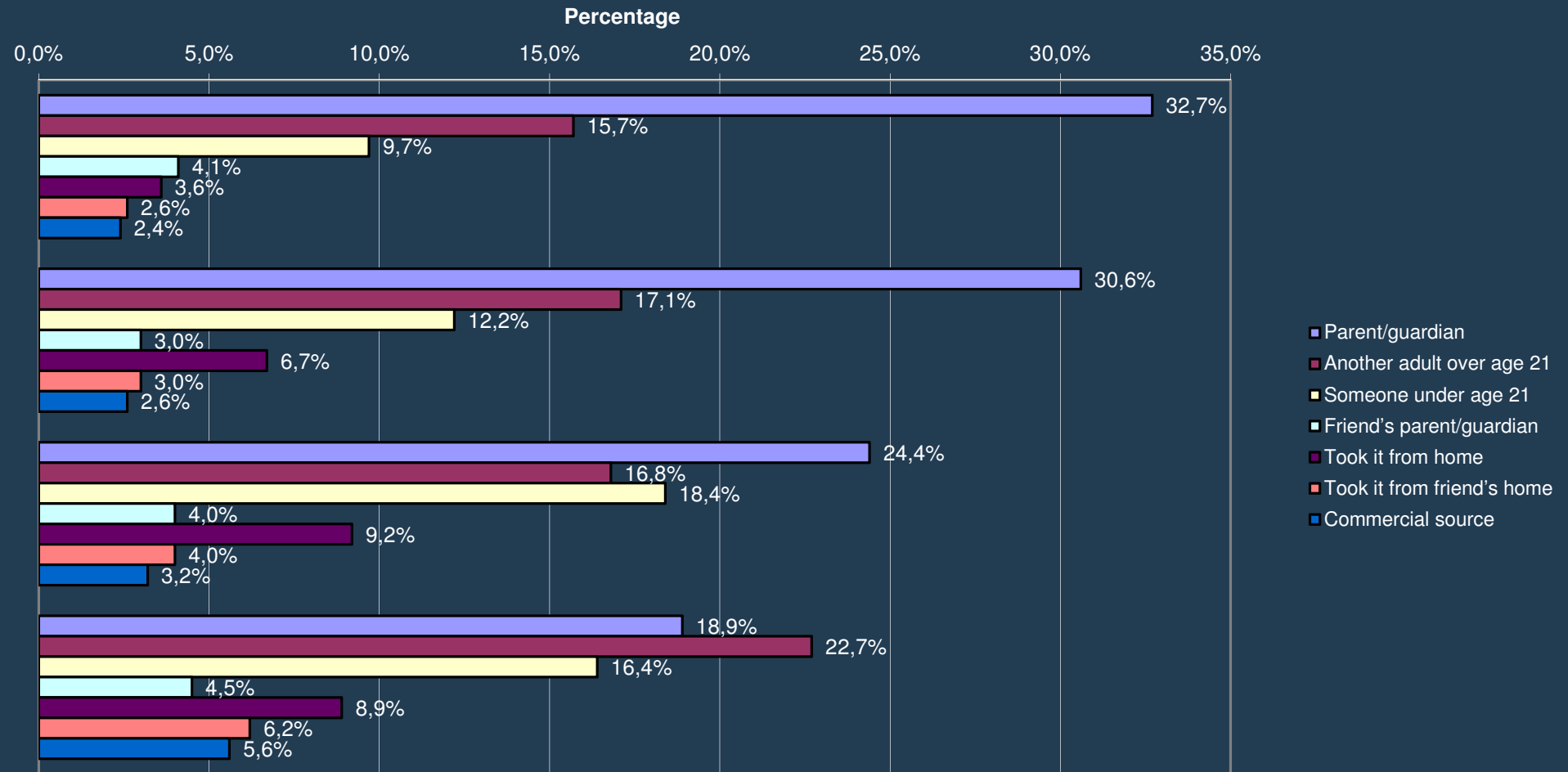


# Social Sources

- More commonly used than commercial
- More challenging to address than commercial sources
  - More potential sources
  - Greater variety in types of social sources
  - More difficult to target

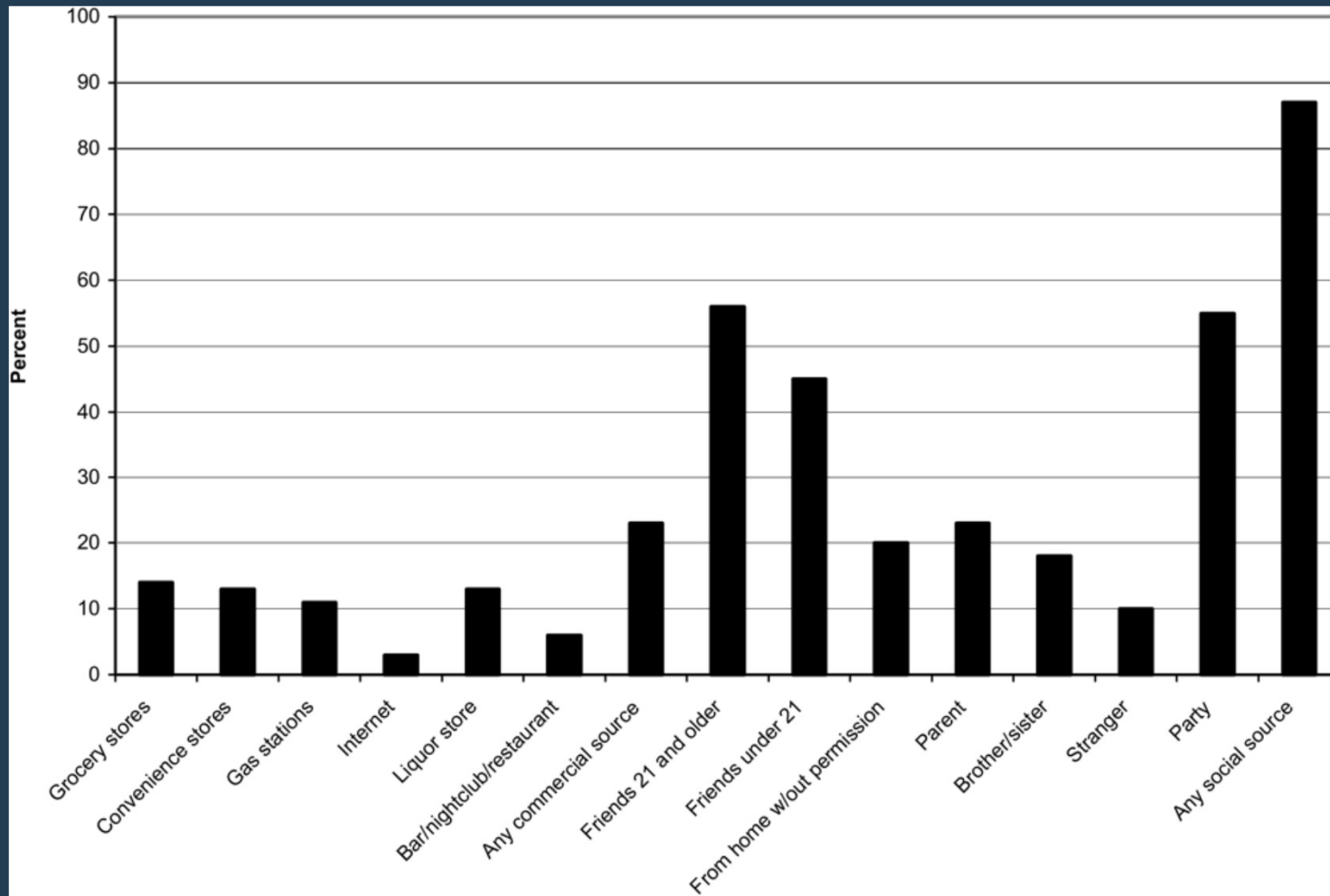


# Developmental Trends of Sources of Alcohol, Grades 6-8

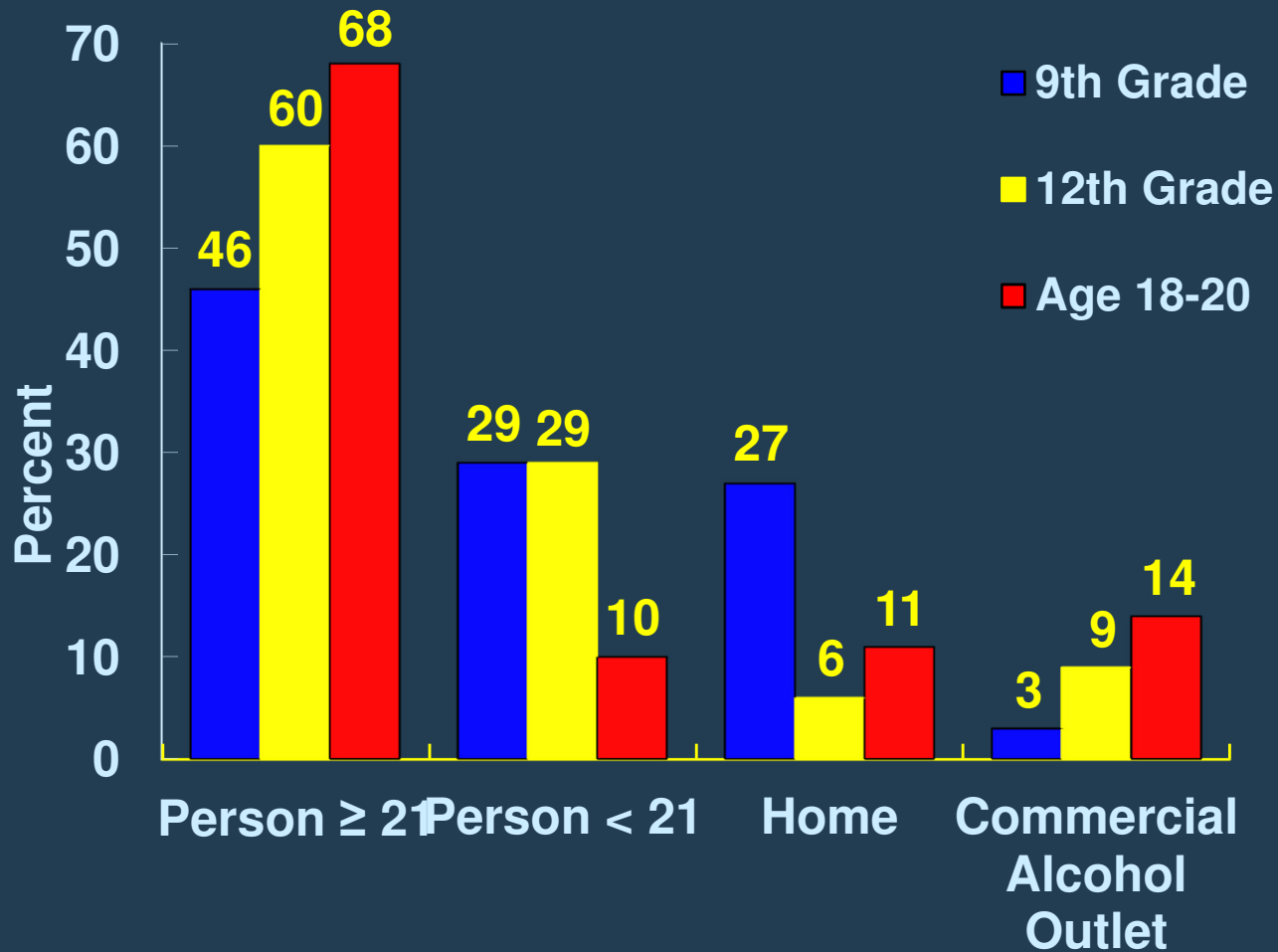


Hearst et al., 2007

# Sources for Past 30 Days: 11th Graders



# Sources of Alcohol at Last Drinking Occasion for Current Drinkers



Note: Total sources add to more than 100% because some respondents reported multiple sources.

# Effectiveness of Enforcement

- Limited Research Information
  - Need to use what limited research we have
  - Draw upon theory and research from other areas
  - Pay close attention to local data

What Social Provision Enforcement  
is being done in the US?

# Any Provision Enforcement

- 46% of local law enforcement agencies conducted efforts targeting adults who provide alcohol to minors

# What are they doing specifically?

Of those agencies doing this enforcement, percent doing each type

Shoulder Tap enforcement campaigns	20.2%
Education Efforts	54.6%
Sticker Campaigns	21.4%
Any other types of enforcement	34.6%

\*20% of agencies used Shoulder Tap enforcement campaigns alone or in combination with other strategies

# Shoulder Tap Enforcement

- Similar to compliance checks
  - Conducted by law enforcement
  - Underage person attempts to shoulder tap under supervision of law enforcement
  - If adult provides to youth, adult is warned, cited, or arrested
  - Publicize





# Considerations for Shoulder Tap Enforcement

- Little research
- Concern over entrapment?
  - Conduct awareness vs. enforcement campaign?
- Study of who would agree to shoulder tap:
  - 8% of general adult population would provide
  - 19% of young adult males would provide
  - (Toomey et al., 2007)

# Predictors of Social Provision Enforcement?

- Local agencies were more likely to conduct enforcement efforts that target adult providers if:
  - Full time officer assigned to alcohol enforcement
  - More resources devoted to underage drinking
  - Jurisdiction has social host law
  - Perceived underage drinking very common

# Conclusions

- Age-21 MLDA saves lives
  - We need to move beyond this debate and move to action
- Need to enforce MLDA access laws
- Need to consider sources used by different age groups
- Need to address multiple sources of alcohol